

Rig 52

SKYTOP RR 400 Skid Double Class III (4200m)

Rig Inventory

- Skytop RR400-H1-4210A-38
- Self-propelled double drum back-in
- Rated capacity at 4200m with 73mm tubing
- Engine - Detroit Diesel 60 Series
- Transmission - Allison CLBT5860DB - 6 speed
- Main drum brakes - 25.4cm x 106.7cm
- Hydromatic brakes - Parmac 122 w/ 1,400L fluid capacity
- Sand line brakes - 20.3cm x 96.5cm
- Mast - - Skytop 102-210XF rated at 93,000 daN / 6lines
- Racking capacity - 4,200 m - 73mm single tubing 4,400m - 19mm double rods
- Travel blocks -
- Lights - vapour-proof incandescent & quartz floods
- Drilling line - 25.4mm x 500 m wire rope
- Sand line - 14mm x 3,600m wire rope

Combination

- 11.3m x 3.3m steel building c/w accumulator
- 4.1m change house
- 7.2m tool house
- Electric toilet
- 55 KW Isuzu diesel generator

Pump

- - 102mm plungers x 152mm stroke 35,000 kpa
- Engine - Detroit Diesel
- Transmission - Spicer 5 speed
- Mission charge pump
- Seven-valve reverse circulating manifold
- Housed in a 3.1m x 7.3m building

Mud Tank

- 31m³ with mud guns, mixing hopper & settling ditch
- 122m of 50mm line pipe and 12m of 102mm suction hose
- Circulation degasser











ASPEN GOLD WELL SERVICING

RIG #12

MAST MANUF.: SKYTOP RIG CO.
MODEL NO.: 102-XF-210
SERIAL NO.: 210-XF-1070
NOM. HEIGHT: 102' (31.1m)
MAXIMUM STATIC HOOK LOAD:

210,000 LBS (93,500 DaN) ON 6 LINES
 180,000 LBS (80,200 DaN) ON 4 LINES
 WITH A WELL SPACING OF 5'-2"



**Maple Leaf
 Consulting Inc.**

340-1073

341-0458

INSPECTED BY: R.D. INSPECTION SERVICES LTD.
FILE NO.: RDI-M-4075-01

DATE: MAY 12, 2001

CERTIFIED BY: MAPLE LEAF CONSULTING INC.

CAUTION:

ACCELERATION OR IMPACT, ALSO SETBACK AND WIND LOADS, AND INCREASED WELL SPACING WILL REDUCE THE MAXIMUM RATED STATIC HOOK LOAD CAPACITY.

MAXIMUM WIND CAPACITY

WITHOUT SETBACKS 100 M.P.H.
 WITH SETBACKS 70 M.P.H.

GUYLINE REQUIREMENTS:

GUY	NOMINAL LENGTH	MIN. BREAKING STRENGTH
A	160 FT.	16,000 LBS.
B	140 FT.	12,000 LBS.
C	190 FT.	7,500 LBS.
D	110 FT.	37,000 LBS.
E	70 FT.	20,000 LBS.

GUYLINE ANCHOR REQUIREMENTS

1. ANCHORS MUST WITHSTAND A PULL OF 16,800 LBS. IN THE DIRECTION OF THE WELL AT 40° TO THE HORIZONTAL.
2. GUYLINES AND ANCHORS MUST MEET MANUFACTURER OR A.P.I. SPECIFICATIONS AND ALL PROVINCIAL INDUSTRIAL HEALTH AND SAFETY REGULATIONS.
3. TOLERANCE ON GUYLINE ANCHOR LOCATION DIMENSIONS IS ±10%.

NOTE:

THIS GUYING DIAGRAM CONFORMS TO THE RECOMMENDATIONS FOR GENERAL CONDITIONS CONTAINED IN A.P.I. STANDARD 4E.





MAXIMUM
50km/h
SPEED



MAXIMUM
80km/h
SPEED





Three analog gauges with white faces and black needles, mounted on a blue metal panel. Below the gauges is a control knob and a small label.

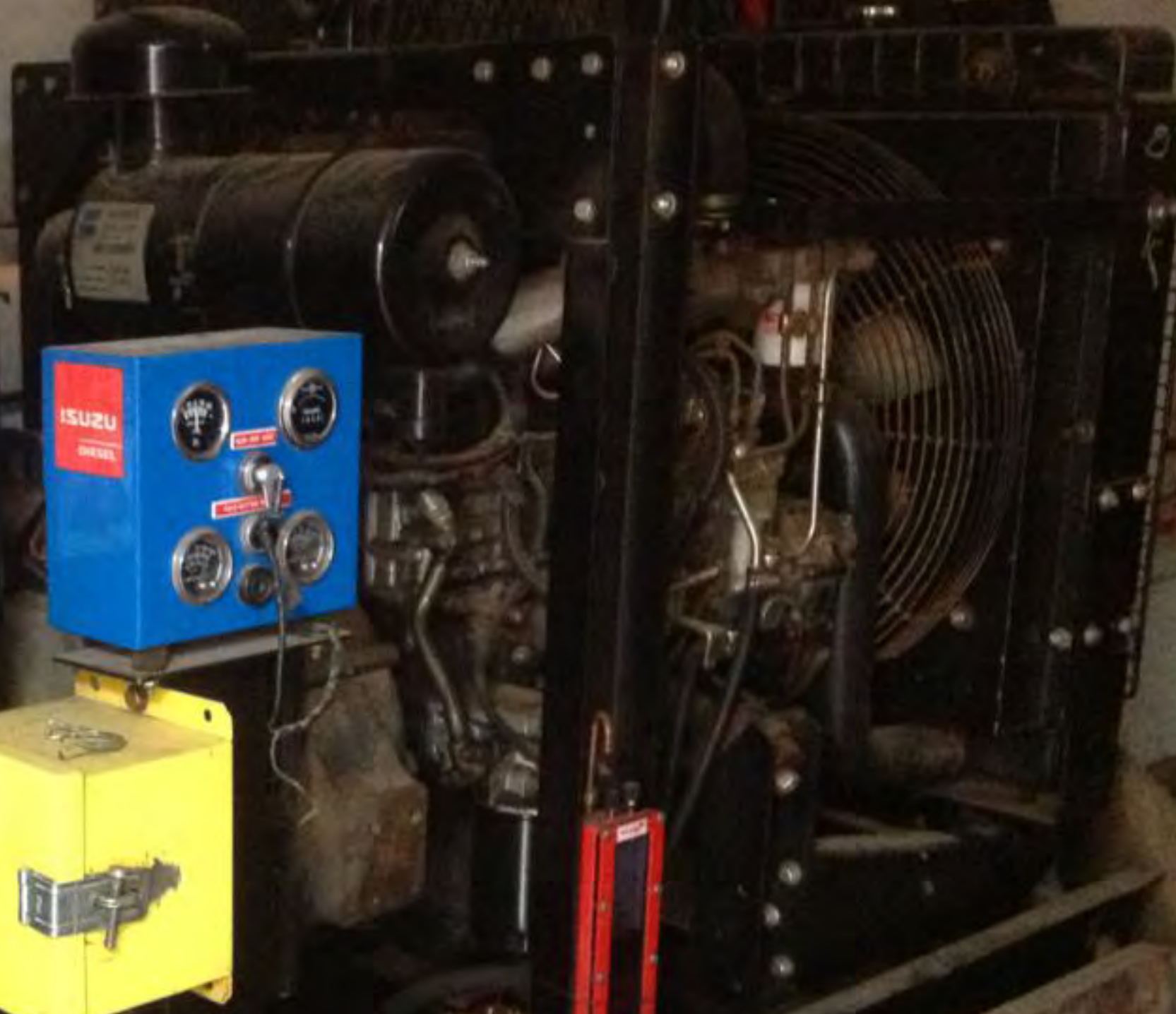
DANGER
HIGH VOLTAGE ⚡

Blue control panel with the text "ISUZU DIESEL" on the left. It features four analog gauges and several control knobs and switches.

Yellow metal box with a silver latch, mounted on a black metal frame.

NEWAGE
STAMFORD

CAUTION
BATTERY
ENCLOSED





GLOW STOP START



HOLD BUTTON TO START



ENACB

NEWAGE

STAMFORD

Model No.	...
Serial No.	...
Rated Power	...
Rated Voltage	...
Rated Current	...
Rated Frequency	...
Rated Efficiency	...
Rated Power Factor	...
Rated Speed	...
Rated Torque	...
Rated Output	...
Rated Input	...
Rated Output Power	...
Rated Input Power	...
Rated Output Current	...
Rated Input Current	...
Rated Output Voltage	...
Rated Input Voltage	...
Rated Output Frequency	...
Rated Input Frequency	...
Rated Output Power Factor	...
Rated Input Power Factor	...
Rated Output Efficiency	...
Rated Input Efficiency	...
Rated Output Torque	...
Rated Input Torque	...
Rated Output Speed	...
Rated Input Speed	...
Rated Output Torque	...
Rated Input Torque	...
Rated Output Speed	...
Rated Input Speed	...

SERIAL NO. ...
MODEL NO. ...





DANGER

Ashman





Panel with three analog gauges and a control knob, mounted on top of the generator.

DANGER
HIGH VOLTAGE ⚡

Blue control panel with "ISUZU DIESEL" branding and four gauges.

Yellow metal box with a latch, likely a battery disconnect switch.

NEWAGE
STAMFORD

CAUTION
BATTERY
ENCLOSED





GLOW STOP START



HOLD BUTTON TO START



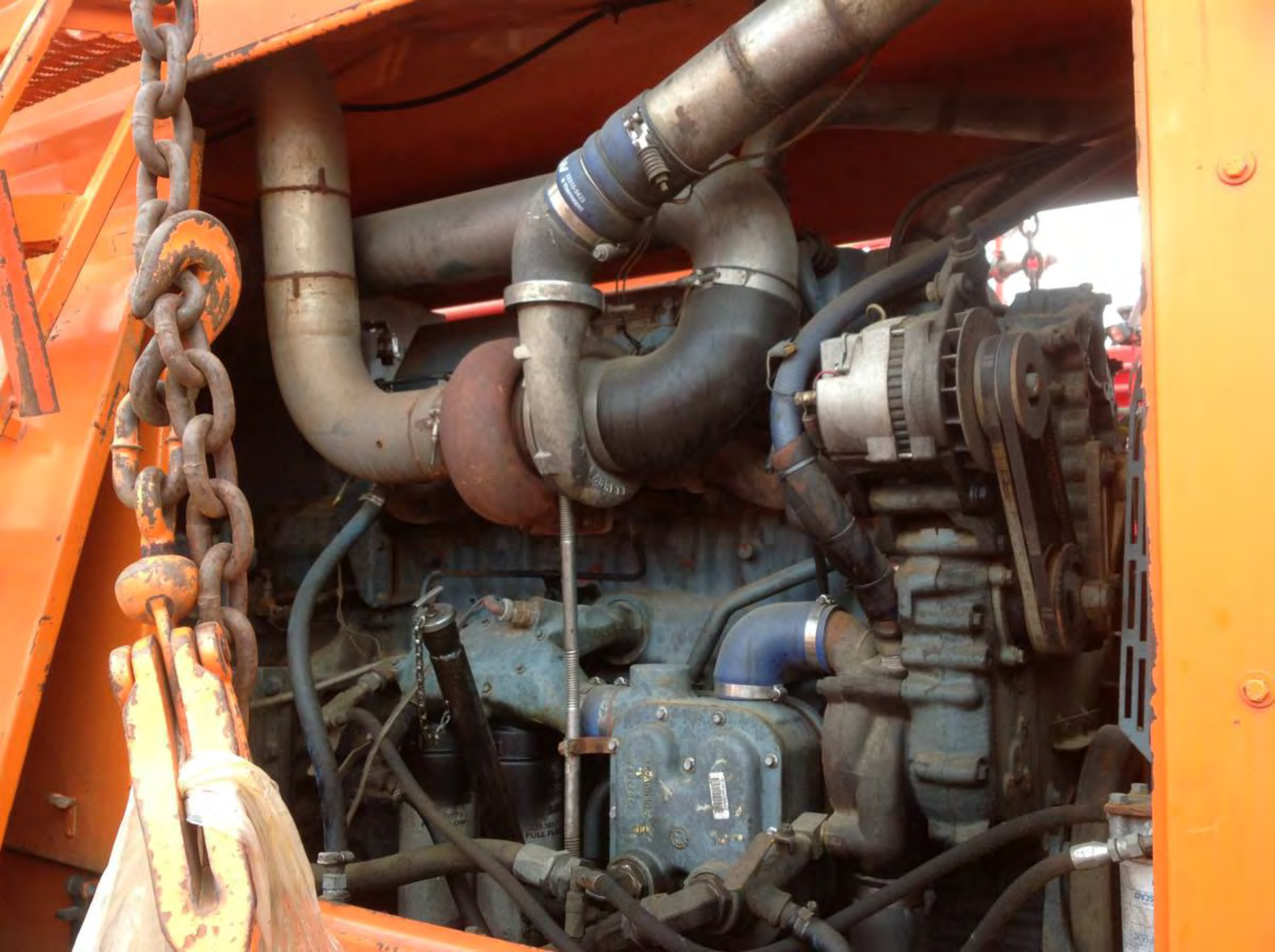
ENACB

SKYIC
BREWSTER



SKYIC
BREWSTER







52

NO SMOKING

292
3

SH 6282

115241



52

NO SMOKING



2924

3



AUTO-START

HYDRAULIC OIL

HYDRAULIC OIL
NON-FUSIBLE
SAFETY
● ●
SAFETY



DANGER

DANGER

WEARING PROTECTION MUST BE WORN
DANGER







NEWAGE

STAMFORD

Model	...
Serial	...
Rating	...
Frequency	...
Efficiency	...
Power Factor	...
Temperature	...
Altitude	...
Humidity	...
Protection	...
Insulation	...
Warranty	...

SERIAL NO: ...
MODEL NO: ...





R1652.









CHECK ENGINE

HIGH IDLE

OFF ON



ENGINE RPM



STOP ENGINE



CHECK ENGINE BUTTON

START



MFG. BY: **WATEROUS**
DETROIT DIESEL-ALLISON



WATER

DANGER

HEARING PROTECTION REQUIRED
**IN THIS AREA YOU
WILL BE EXPOSED
TO 96-105 dBA**

